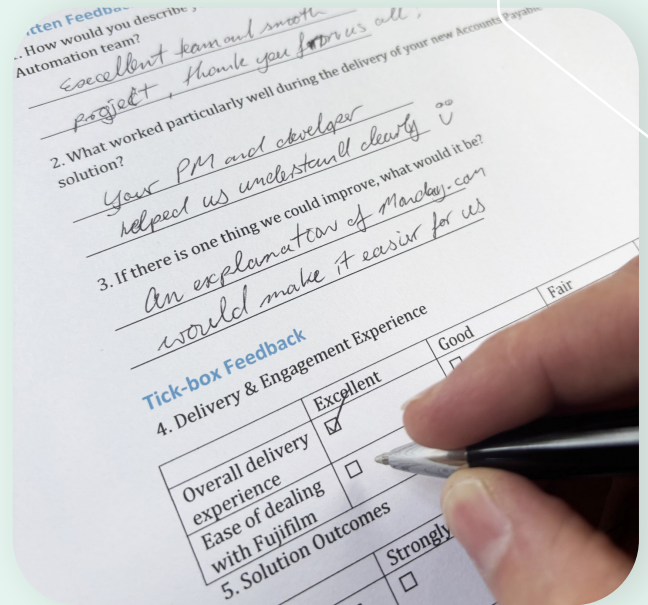


Survey and form digitisation services

Transforming paper forms into structured, searchable data

The Process Automation team at FUJIFILM Business Innovation New Zealand (FBNZ) provides end to end digitisation services for organisations that manage large volumes of paper-based surveys, questionnaires and structured forms. Our service converts physical documents into clean, searchable digital records and structured data ready for upload into any business system or customer database.

This capability is ideal for print providers, mail houses, fulfilment operations, and organisations managing high volume customer engagement or compliance documentation.



Service requirements we support

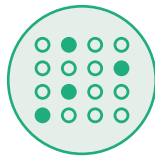
We specialise in extracting structured data from completed paper forms, including:



Barcode values



Tick-boxes



OMR responses



OCR handwriting



Page level metadata

Data can be delivered in CSV, XML or any preferred format for ingestion into customer applications or databases. Searchable PDF versions are provided for each document.

Rapid deployment and scaled delivery

Our operational model enables rapid mobilisation, even under tight timelines:

- Requirements captured and solution agreed quickly
- Production ramp-up within days
- Early start capability for urgent workloads
- Scaled processing for high daily volumes

Typical throughput

We process thousands of forms within the first few days of production with continuous high volume capacity suitable for extended campaigns or recurring workloads.

Technical capability and operational excellence

Automated intelligent data capture

FBNZ deploys a fully automated intelligent capture workflow to maximise accuracy and reduce manual handling. Our extraction logic typically includes barcode recognition, OMR tickbox capture and OCR handwriting extraction.

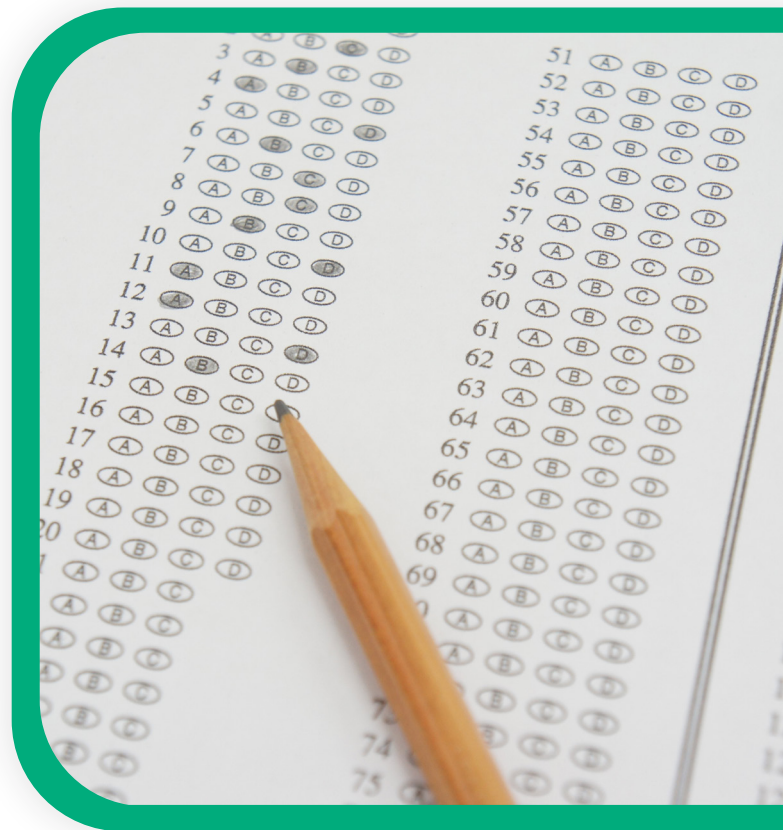
Automated rules based processing ensures consistency and speed across every batch.

Support for multiple form variants

We understand that real world form processing often involves variations. Our solution supports:

- Automatic identification and classification of form variations
- Tailored extraction rules per layout
- Processing of all variations through a single unified workflow

This ensures accurate extraction even when multiple versions are in circulation.



Quality assurance and exception handling

FBNZ ensures total data integrity through robust QA controls and a standard 5% manual validation of all processed forms. Our specialists verify extracted fields to maintain high accuracy and auditability, while identifying ongoing opportunities for system retraining and process improvement.

Exception management

- Automatic identification of forms that fail validation checks
- Dedicated exception queue for operator review
- Isolation of out of scope or misformatted documents
- Businesses managing recurring survey or form campaigns

By combining automated validation with expert manual review, we ensure that your data is captured accurately.

It is a proven solution for teams needing



Fast mobilisation



Automated extraction at scale



Support for multi variation documents



Secure handling of physical files



High accuracy QA and exceptional control



FUJIFILM | Business Innovation

FUJIFILM Business Innovation New Zealand Ltd
Level 5, 12 Normanby Road, Mt Eden, Auckland 1024, New Zealand

Visit our website or give us a call to find out more about what we do.

09 356 4200 betterbusiness-fbnz.fujifilm.com

FUJIFILM and FUJIFILM logo are registered trademarks or trademarks of FUJIFILM Corporation.